

DESIGN | QUALITY | INSULATION
OPERATION & MAINTENANCE

Lacuna[®]
of DENMARK

FOLDING DOOR OPERATION

EVEN NUMBER OF LEAVES

Closed Position

If the door is fitted with a patio door handle, all handles should be in the vertical position. If the opening door has a continuous handle, lift it gently to engage the lock. If the door is supplied with a fastener or cylinder, it can now be engaged.

Opening

Patio door handles

Lift the patio door handle gently to unlock the door.

Continuous handle

Unlock the door by the fastener or cylinder. Pull the handle down gently, so the door opens.

The opening door is hinged on the frame

The door opens in the opposite direction to the other door leaves. 2. The door leaf opens by releasing the lever bolts at the top and the bottom, after which the door can open 180 degrees onto the back of the next door leaf and fastened with the door holder.

The opening door is hinged on door leaf 2

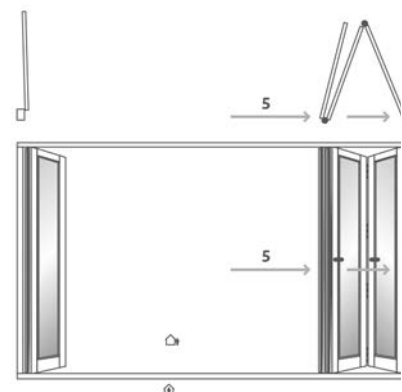
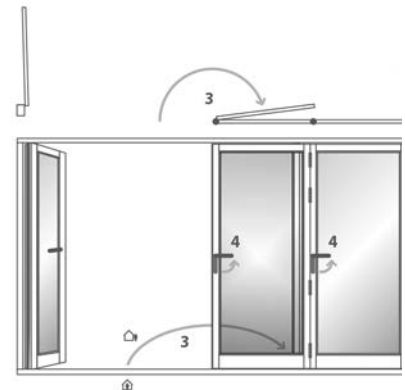
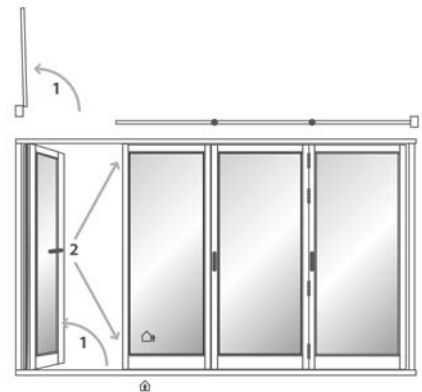
The door opens 180 degrees onto the back of the next door leaf and fastened with the door holder. The door is released with the lever bolt at the top and bottom and then opened.

Folding Function

Turn the handle on the other door leaves to the horizontal position. Make sure that the first door is locked onto the second frame. Push the other frames out slightly. The door can now be folded to one side.

Closing

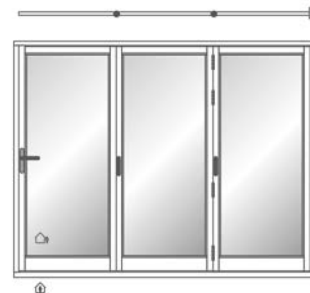
In the reverse order. Do not release the first door leaf before the other door leaves are locked. The handles should only be in a vertical position when the door is pulled completely to.



ODD NUMBER OF LEAVES

Closed Position

If the door is fitted with a patio door handle, all handles should be in the vertical position. If the opening door has a continuous handle, lift it gently to engage the lock. If the door is supplied with a fastener or cylinder, it can now be engaged.



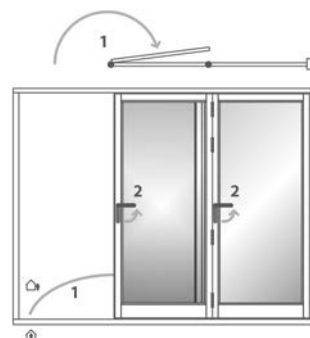
Opening

Patio door handles

Lift the patio door handle gently to unlock the door.

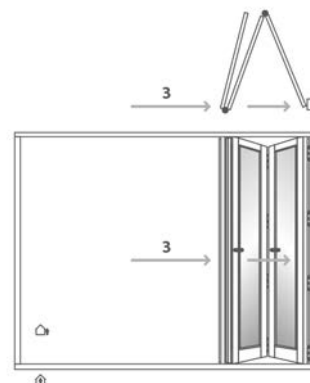
Continuous handle

Unlock the door by the fastener or cylinder. Pull the handle down gently, so the door opens. The opening door leaf can now open 180 degrees onto the back of the next door leaf and fastened with the door holder.



Folding Function

Turn the handle on the other door leaves to the horizontal position. Make sure that the first door is locked onto the second frame. Push the other frames out slightly. The door can now be folded to one side.



Closing

In the reverse order. Do not release the first door leaf before the other door leaves are locked. The handles should only be in a vertical position when the door is pulled completely to.

2 LEAF DOORS

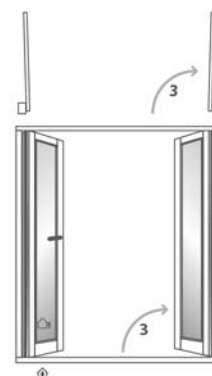
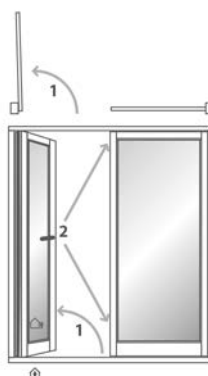
Opening

Patio door handles

Lift the patio door handle gently to unlock the door.

Closing

In the reverse order



CLEANING AND CARE

General Maintenance

Element maintenance must not take place in strong sunlight or rain. Exterior folding doors, windows and exterior doors in all material categories must have regular maintenance, which includes cleaning and lubrication and checking the weather seals.

This maintenance is carried out according to the following guidelines:

Lubrication

All moving parts on hinges and the closing and locking fittings should be lubricated once a year. Pure metal connections are lubricated with oil that can be applied with an oil can, syringe or spray can with a thin tube.

Movable connections between metal and synthetic material are lubricated with candle wax or a special lubricant in accordance with the supplier's instructions. Such connections are found on different types of slide rails, and it is crucial also to ensure the rail sliding surfaces, etc., are clean, so they work properly.

Cleaning

Depending on orientation and location, the surfaces of exterior frames and frame surfaces will get dirty. They should be cleaned at suitable intervals, and this is usually done at the same time as cleaning the panes, where the frame and frame surfaces are washed with water and regular detergent. Then wipe off the surfaces and frames. All external metal parts must be cleaned regularly. Initial corrosion can be treated early with an ordinary sponge scourer (not steel/metal).

Weather Seals

Weather seals should be inspected during the annual lubrication. Check that weather seals are positioned correctly and fixed in place, and that the seals continue to fulfil their sealing function. For most element types, it is a simple job of removing and remounting the weather seals, and if possible, it should always be done with the maintenance of any surface treatment.

Weather seals must never be painted!

Painted Elements

All our elements are painted at the factory with a water-based environmentally friendly paint. This is a complete treatment, but exposure to the weather and wind over time means that the elements should be re-treated (usually only after many years of use).

Check the exterior folding door for any damage or cracks. Generally, oil-based filler is used on bare wood and acrylic filler on primed and painted wood.

Lacuna recommends that you treat exterior folding doors with the supplied paint. Contact Lacuna if you need paint. Please remember to state the colour code indicated in the order confirmation, order number or invoice number. Repair paint of the right type will be supplied with the door.

Paint the surfaces with a brush or roller until you have a covered surface.

Oil-treated Elements

All elements are oil-treated at the factory. This basic treatment is not permanent. The elements should be oiled for the first time immediately after installation. The oil is easily applied with a cloth and then wipe off any excess oil within 15 minutes. Wash the panes immediately afterwards (to remove any oil).

General Maintenance

- Apply the oil with a fine sanding sponge or cloth.
- If the grain has raised in the wood, use a sanding sponge that will make the surface smooth again.
- Do not touch the glass with the sanding sponge.
- After 10-15 minutes, remove the excess oil with a dry cloth.
- Then give the panes a normal clean.

We recommend that you maintain the exterior side of oiled elements at least once a year. Preferably in spring and autumn facing south and west, depending on how exposed the elements are. The oil will give the wood a beautiful glow. Re-treatment is rarely necessary inside. If you do not maintain with oil, small cracks in the wood can appear as it dries out (shrinks). Insufficient maintenance can have consequences for the door's operation, durability and warranty.



